

# PRODUCT CATALOGUE

For Fine Pressure And  
Temperature Measurement





## Company Profile

**E**stablished in 2002, Shenzhen OULD INSTRUMENT CO., LTD. is committed to the research and development, production and sales of industrial automation instruments. With a manufacturing plant of 2,000 square meters, Our company is audited to conform ISO9001 quality management system. Our products are widely used in the industries of air compressors, HVAC, water treatment, hydraulic, food and beverage, hygiene, machine engineering, networking, etc. We supply low-cost, durable and reliable solutions, and produce OEM products as well. Pioneering, innovation, and integrity are the mission of our company. We aim to provide high quality products and excellent services to our customers continuously.

### INNOVATION

- Large percentage of market share
- Professional manufacturing
- Advanced production lines for pressure sensors, temperature sensors, and pressure measurement components

- High-end research and development capability
- Excellent production capacity to bring customer innovated and value-added products

### PRODUCTION

### QUALITY

- ISO9001 quality management system
- CE certified products
- Identified as National High-Tech Enterprise

- Quick-response within 24 hours
- 12-18 month long warranty period

### SERVICE

Wireless Pressure Transmitters  
PT102, PT-112, PT-103, PT-113

Industrial applications: water pipe network, power station inspection, locomotive braking system, building automation, constant pressure water supply system, hydrologic monitoring, industrial process detection and control, etc.

PT-102/112/103/113 Wireless Pressure Transmitters

PT-102/112/103/113 wireless pressure transmitters are high-performance pressure monitoring devices integrated with pressure acquisition and wireless communication. They are developed according to the market demand and adopt low-power sensor technology. They are powered by high-energy lithium battery and the pressure signal can be directly collected. They not only have data storage function, but also has the function of automatic detection and real-time alarm. They realize the wireless remote monitoring of pressure signal process. The sampling interval, storage interval, reporting interval, etc. can be set by software. Multiple networks are available NB-IOT/GPRS/LoraWan. Both waterproof aluminum housing and plastic housing are available.

PT-102/112/103/113 wireless pressure transmitters are widely used in fire protection, heating pipelines, water plants, oil refineries, oil pipelines, sewage treatment plants, urban gas pipelines and other industrial fields to achieve measurement of liquid, gas and steam pressure.



- ° Accuracy: 0.075%FS-1% FS
- ° Measure Range: -0.1MPa~60MPa
- ° Working Temperature: -40~85°C
- ° Temperature Drift: ±0.02%FS/K
- ° Overload Pressure: 2\*FSO
- ° Process Connection: G1/4, M20x1.5, etc.
- ° Communication mode: NB-IOT, GPRS, LoraWan
- ° Battery Capacity: 38000mAH
- ° Battery Life: 3-5 years

Pressure Sensor Modules

PM18V, PM18I, PM10D

Industrial applications: refrigeration, air conditioning equipment, air compressors, water treatment, automobile, etc.

PM18V/PM18I

PM18V/PM18I pressure sensor modules use our own researched and developed high-precision ceramic piezoresistive sensor core. It features compact size and easy installation. It has a wide range of measure range and reliable output signal. It has good stability in a wide temperature range and is widely used in refrigeration, air conditioning equipment, air compressors, water treatment, automobile and other fields.



PM18V

PM18I

- Main Features:
- Multiple pressure measure ranges;
  - Compact size and easy for installation;
  - Short response time;
  - Suitable for high-temperature environment;
  - Excellent long-term stability;
  - Cost-effective.

- ° Accuracy: 0.5%FS
- ° Pressure Range: 0 - 1Bar - 100Bar
- ° Output Signal: 4-20mA, 0.5-4.5VDC
- ° Power Supply: 5 - 36VDC
- ° Temperature Drift: ±0.02%FS/K
- ° Operating Temperature: -40~125°C
- ° Overload Pressure: 2\*FSO
- ° Electrical Connection: cable connection or empty pad

PM10D

PM10D pressure sensor module is a special mini product developed by our company according to the market needs. It is widely used in process control fields such as variable frequency pump, complete water supply and air conditioning equipment. Good electrical performance and long-term stable performance makes it the first choice for similar industries, and can directly replace a variety of similar imported products.



- Main Features:
- High-reliable imported diffused silicon pressure chip.
  - Full 316L stainless steel material φ19 standard OEM sealing.
  - Wide temperature compensation.
  - Signal processing used high-precision, high-bandwidth, low-latency, low-power conditioning chip.
  - 16-bit ADC, output through 6th-order polynomial Corrected.
  - SPI/IIC output has CRC protection, frequency up to 400KHZ, delay less than 0.1ms, rated current as low as 3mA.

- ° Accuracy: 0.5%FS
- ° Pressure Range: 0 - 1Bar - 400 Bar
- ° Output Signal: SPI/IIC
- ° Power Supply: 2.7-5.5VDC
- ° Supply Current: Typ 3mA
- ° Temperature Drift: ±0.03%FS/K
- ° Operating Temperature: -20°C - 85°C
- ° Overload Pressure: 2\*FSO
- ° Electrical Connection: cable connection
- ° Long-term Stability: ±0.03%FS/year

## Pressure Transmitters

PT-301, PT-304, PT-306, PT-307, PT-309, DP-20(differential pressure transmitter)

Industrial applications: air compressor, etc.

### PT-301 Pressure Transmitter

The compact designed PT-301 pressure transmitter has excellent stability for the pressure measurement of a wide temperature range and provides various optional connections. It uses advanced sensor element, and offers a wide measure range and various output signals.



- ° Accuracy: 0.5%FS, 1%FS
- ° Pressure Range: 0 - 60MPa
- ° Output Signal: 4 - 20mA, 0.5 - 4.5VDC
- ° Temperature Drift:  $\pm 0.02\%$ FS/K
- ° Operating Temperature: -40 - 85°C
- ° Overload Pressure: 2\*FSO
- ° Electrical Connection: Packard connector
- ° Process Connection: G1/4, NPT1/4, etc.

### PT-304 Pressure Transmitter

The compact designed PT-304 pressure transmitter has excellent stability for the pressure measurement in a wide temperature range and provides various optional connections. It uses advanced sensor element, and offers a wide measure range and various output signals.



- ° Accuracy: 0.5%FS, 1%FS
- ° Pressure Range: 0 - 60MPa
- ° Output Signal: 4 - 20mA, 0.5 - 4.5VDC
- ° Temperature Drift:  $\pm 0.02\%$ FS/K
- ° Operating Temperature: -40 - 85°C
- ° Overload Pressure: 2\*FSO
- ° Electrical Connection: cable connection
- ° Process Connection: G1/4, NPT1/4, etc.

### PT-306 Pressure Transmitter

The PT-306 pressure transmitter is specially designed according to the professional requirements of air compressor industry. It provides excellent performance and long-term stability, and features compact size for easy installation and high resistance to frequency interference and surge impact.



- ° Accuracy: 0.5%FS, 1%FS
- ° Pressure Range: 0 - 60MPa
- ° Output Signal: 4 - 20mA, 0.5 - 4.5VDC
- ° Temperature Drift:  $\pm 0.02\%$ FS/K
- ° Operating Temperature: -40 - 85°C
- ° Overload Pressure: 2\*FSO
- ° Electrical Connection: 12M
- ° Process Connection: G1/4, R1/4, etc.

### PT-307 Pressure Transmitter

PT-307 pressure transmitter offers excellent performance and long-term stability by using advanced pressure measurement element. It is compact designed for easy installation, and is suitable for Original Equipment Manufacturers(OEM's) pressure measurement.



- ° Accuracy: 0.5%FS, 1%FS
- ° Pressure Range: 0 - 60MPa
- ° Output Signal: 4 - 20mA, 0.5 - 4.5VDC
- ° Temperature Drift:  $\pm 0.02\%$ FS/K
- ° Operating Temperature: -40 - 85°C
- ° Overload Pressure: 2\*FSO
- ° Electrical Connection: Hirschmann GDS series
- ° Process Connection: G1/4, NPT1/4, etc.

### PT-309 Pressure Transmitter

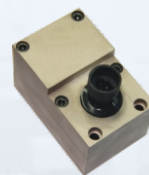
The PT-306 pressure transmitter is specially designed according to the professional requirements of air compressor industry. It provides excellent performance and long-term stability, and features compact size for easy installation and high resistance to frequency interference and surge impact.



- ° Accuracy: 0.5%FS, 1%FS
- ° Pressure Range: 0 - 60MPa
- ° Output Signal: 4 - 20mA, 0.5 - 4.5VDC
- ° Temperature Drift:  $\pm 0.02\%$ FS/K
- ° Operating Temperature: -40 - 85°C
- ° Overload Pressure: 2\*FSO
- ° Electrical Connection: Hirschmann GDS series
- ° Process Connection: G1/4, R1/4, etc.

### DP-20 Differential Pressure Transmitter

DP-20 differential pressure transmitter is widely used in double screw air compressors with compact size for easy installation. Its outstanding performance and long-term stability makes it the best choice among similar products.



- ° Accuracy: 0.5%FS
- ° Pressure Range: 0 - 3Bar
- ° Output Signal: 4 - 20mA, 0.5 - 4.5VDC
- ° Operating Temperature: -40 - 105°C
- ° Power Supply: 5V, 8 - 36V
- ° Process Connection: R1/8, or on request



## Pressure Transmitters

PT-401, PT-406, PT-409

Industrial applications: refrigeration systems, air conditioning systems, heating systems, vitalization systems, heat pumps, water pumps, air compressors, etc.

PT-4 Series pressure sensors/transducers/transmitters PT-401, PT-406 and PT-409, are widely used for the refrigeration, heating, vitalization, and air conditioning systems. With the specially-designed isolated stainless steel structure, they are of compact size and easy for installation. With advanced sensor element built inside, they have reliable and stable performance in a wide range of temperature. They have CE certificates, and are of low-cost which makes them the best choice among similar products.



## Features:

- Low-cost
- Compact size
- Wide temperature range
- Long-term stability
- Multiple pressure ranges are available
- Multiple output signals are available
- Multiple kinds of connectors are available
- Suitable for high-temperature environment

## PT-401 Pressure Transmitter



- Pressure Range: -0.1Mpa - 60Mpa
- Accuracy:  $\pm 0.5\%$ FS
- Output Signal: 0.5 - 4.5VDC, 4 - 20mA
- Overload Pressure: 2\*FSO
- Operating Temperature: -40°C - 125°C
- Temperature Drift:  $\pm 0.02\%$ FS/K
- Power Supply: 8 - 45VDC
- Electrical Connection: Cable Connection
- Process Connection: G1/4, 1/4NPT, R1/4, or on request

## PT-406 Pressure Transmitter



- Pressure Range: -0.1Mpa - 60Mpa
- Accuracy:  $\pm 0.5\%$ FS
- Output Signal: 0.5 - 4.5VDC, 4 - 20mA
- Overload Pressure: 2\*FSO
- Operating Temperature: -40°C - 125°C
- Temperature Drift:  $\pm 0.02\%$ FS/K
- Power Supply: 8 - 45VDC
- Electrical Connection: M12 Industrial plug
- Process Connection: G1/4, 1/4NPT, R1/4, or on request

## PT-409 Pressure Transmitter



- Pressure Range: 0 - 1Bar - 100Bar
- Accuracy:  $\pm 0.5\%$ FS
- Output Signal: 0.5 - 4.5VDC, 0-10VDC, 4 - 20mA (2 or 3 wires both available)
- Overload Pressure: 2\*FSO
- Operating Temperature: -40°C-125°C
- Temperature Drift:  $\pm 0.02\%$ FS/K
- Power Supply: 8 - 45VDC
- Electrical Connection: Hirschmann GDM connector
- Process Connection: G1/4, 1/4NPT, R1/4, or on request

**Pressure Transmitters**

PT-500, PT-501, PT-504

Industrial applications: printing and dyeing industry, chemical industry

PT-500/PT-501/PT-504 pressure transmitters are suitable for pressure measurement of small measure range and high accuracy requirement. It has strong overload capacity by using advanced silicon sensor element and isolated stainless steel structure. Various pressure connections and output signals are available. It is professional designed for use in printing and dyeing industry, and other chemical industries. They are suitable for pressure measurement and control of weak pressure in chemical coatings, paints, slurries, asphalt, crude oil and other viscous media with high accuracy.

**Features:**

- High-precision signal output and resolution by using diffusion silicon pressure sensor core with imported isolated diaphragm structure
- Sturdy and long rust-proof effect by using full 316L stainless steel housing
- No clogging of viscous media during measurement process by using special designed damping screw structure in process connection part

**PT-500 Pressure Transmitter**

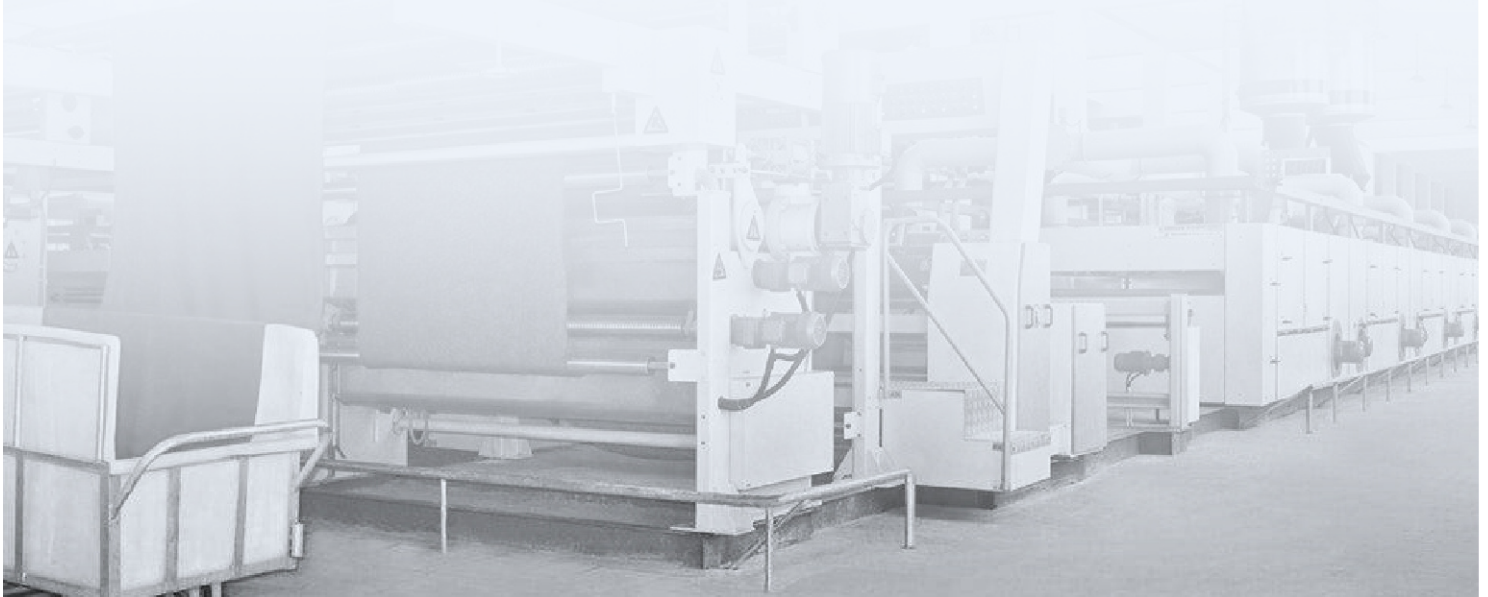
- ° Accuracy: 0.2%FS - 0.5%FS
- ° Pressure Range: 0 - 10KPa, 20KPa, 50KPa
- ° Output Signal: 1 - 5V, 4 - 20mA, etc.
- ° Operating Temperature: -40 - 85°C
- ° Temperature Drift:  $\pm 0.02\%$ FS/K
- ° Overload Pressure: 10\*FSO
- ° Electrical Connection: cable connection
- ° Process Connection: G1/4, NPT1/4, etc.

**PT-501 Pressure Transmitter**

- ° Accuracy: 0.2%FS - 0.5%FS
- ° Pressure Range: 0 - 60MPa
- ° Output Signal: 0.5V - 4.5V, 4 - 20mA, etc.
- ° Operating Temperature: -40 - 85°C
- ° Temperature Drift:  $\pm 0.02\%$ FS/K
- ° Overload Pressure: 2\*FSO
- ° Electrical Connection: Packard connector
- ° Process Connection: G1/4, NPT1/4, etc.

**PT-504 Pressure Transmitter**

- ° Accuracy: 0.5%FS - 1%FS
- ° Pressure Range: 0 - 60MPa
- ° Output Signal: 0.5V - 4.5V, 4 - 20mA
- ° Operating Temperature: -40 - 125°C
- ° Temperature Drift:  $\pm 0.02\%$ FS/K
- ° Overload Pressure: 2\*FSO
- ° Electrical Connection: cable connection
- ° Process Connection: G1/4, NPT1/4, etc.



Pressure Transmitters

PT-506, PT-507, PT-509, PT-511, PT-516

Industrial applications: water treatment, water pump, urban water supply system, etc.

PT-506/PT-507/PT-509/PT-511/PT-516 pressure transmitters are specially developed according to the demands of water treatment industry. They are widely used in the fields of variable frequency water pump, complete water supply equipment, and other water treatment systems. They are the best choice among similar products.

Features:

- Professional to prevent from water hammer impact
- Excellent performance and long-term stability
- Optional 4-bit LED display and alarm function for flow switch

**PT-506** Pressure Transmitter



- ° Accuracy: 0.2%FS - 0.5%FS
- ° Pressure Range: 0 - 60MPa
- ° Output Signal: 0.5V - 4.5V, 4 - 20mA, etc.
- ° Operating Temperature: -40 - 85°C
- ° Temperature Drift: ±0.02%FS/K
- ° Overload Pressure: 2\*FSO
- ° Electrical Connection: 12M
- ° Process Connection: G1/4, NPT1/4, etc.

**PT-507** Pressure Transmitter



- ° Accuracy: 0.5%FS - 1%FS
- ° Pressure Range: 0 - 60MPa
- ° Output Signal: 0.5V - 4.5V, 4 - 20mA
- ° Operating Temperature: -40 - 125°C
- ° Temperature Drift: ±0.02%FS/K
- ° Overload Pressure: 2\*FSO
- ° Electrical Connection: Hirschmann GDS series
- ° Process Connection: G1/4, NPT1/4, etc.

**PT-509** Pressure Transmitter



- ° Accuracy: 0.2%FS - 0.5%FS
- ° Pressure Range: 0 - 60MPa
- ° Output Signal: 0.5V - 4.5V, 4 - 20mA, etc.
- ° Operating Temperature: -40 - 85°C
- ° Temperature Drift: ±0.02%FS/K
- ° Overload Pressure: 2\*FSO
- ° Electrical Connection: Hirschmann GDS series
- ° Process Connection: G1/4, G1/2, etc.

**PT-511** Pressure Transmitter

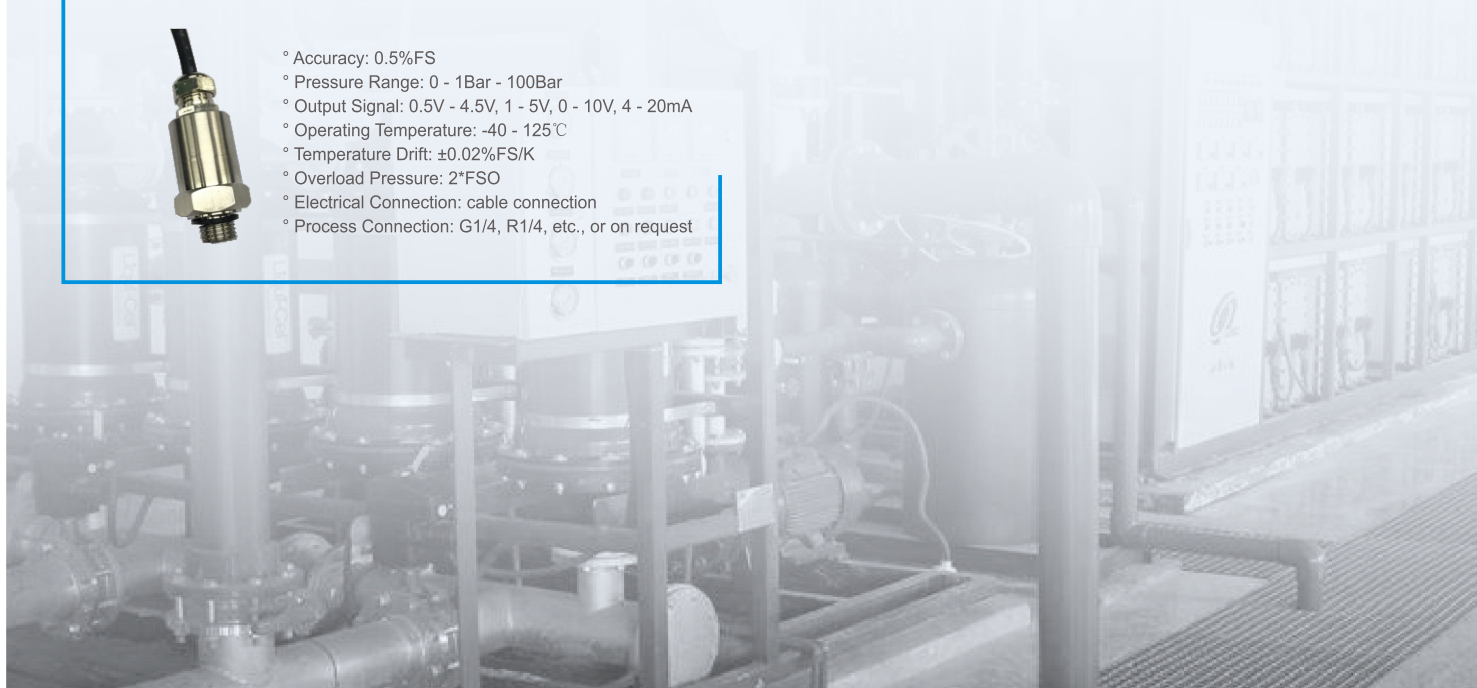


- ° Accuracy: 0.2%FS - 0.5%FS
- ° Pressure Range: 0 - 60MPa
- ° Output Signal: 0.5V - 4.5V, 4 - 20mA, etc.
- ° Operating Temperature: -40 - 85°C
- ° Temperature Drift: ±0.02%FS/K
- ° Overload Pressure: 2\*FSO
- ° Electrical Connection: Hirschmann GDM series
- ° Process Connection: G1/4, NPT1/4, etc.

**PT-516** Pressure Transmitter



- ° Accuracy: 0.5%FS
- ° Pressure Range: 0 - 1Bar - 100Bar
- ° Output Signal: 0.5V - 4.5V, 1 - 5V, 0 - 10V, 4 - 20mA
- ° Operating Temperature: -40 - 125°C
- ° Temperature Drift: ±0.02%FS/K
- ° Overload Pressure: 2\*FSO
- ° Electrical Connection: cable connection
- ° Process Connection: G1/4, R1/4, etc., or on request



## Pressure Transmitters

PT-605, PT-607, PT-608, PT-609

Industrial applications: food and beverage industry, hygiene industry, etc.

### PT-605 Pressure Transmitter

The compact designed PT-605 pressure transmitter with flush diaphragm uses advanced sensor element and isolated stainless steel structure. With CE certificate, it has excellent stability, and the service life reaches over ten million times. It is widely used in food beverage industry, pharmaceutical industry etc.



- ° Accuracy: 0.2%FS, 0.5%FS
- ° Pressure Range: 0 - 100KPa - 10MPa
- ° Output Signal: 0 - 5V, 0 - 10V, 4 - 20mA, etc.
- ° Temperature Drift: ±0.02%FS/K
- ° Operating Temperature: -40~85°C
- ° Overload Pressure: 2\*FSO
- ° Electrical Connection: Hirschmann GDM series
- ° Process Connection: G1/2, M20\*1.5, etc, or on request

### PT-607 Pressure Transmitter

The compact designed PT-607 semi-flush diaphragm pressure transmitter uses advanced capacitive sensor element that provides outstanding performance and long-term stability for the pressure measurement of small measure range with high accuracy. With CE certificate, It is widely used in food beverage industry, pharmaceutical fields, etc.



- ° Accuracy: 0.1%FS, 0.2%FS
- ° Pressure Range: 0 - 2KPa - 2MPa
- ° Output Signal: 0 - 5V, 0 - 10V, 4 - 20mA, etc.
- ° Temperature Drift: ±0.02%FS/K
- ° Operating Temperature: -40 - 85°C
- ° Overload Pressure: 10\*FSO
- ° Electrical Connection: Hirschmann GDM series
- ° Process Connection: M42\*1.5

### PT-608 Pressure Transmitter

The compact designed PT-608 pressure transmitter with semi-flush diaphragm uses advanced sensor element and isolated stainless steel structure. With CE certificate, it has excellent stability and optional on-site digital display for the measure value. It is widely used in food beverage industry, pharmaceutical industry etc.



- ° Accuracy: 0.2%FS, 0.5%FS
- ° Pressure Range: 0 - 100KPa - 10MPa
- ° Output Signal: 0 - 5V, 0 - 10V, 4 - 20mA, etc.
- ° Temperature Drift: ±0.02%FS/K
- ° Operating Temperature: -40 - 85°C
- ° Overload Pressure: 2\*FSO
- ° Electrical Connection: PG7 waterproof connector
- ° Process Connection: 2-inch clamp, etc., or on request

### PT-609 Pressure Transmitter

The compact designed PT-609 pressure transmitter with semi-flush diaphragm uses advanced sensor element and isolated stainless steel structure. It features long-term stability and long service life in the pressure measurement of a wide temperature range. With CE certificate, it is widely used in food beverage industry, pharmaceutical industry etc.



- ° Accuracy: 0.2%FS, 0.5%FS
- ° Pressure Range: 0 - 100KPa - 10MPa
- ° Output Signal: 0 - 5V, 0 - 10V, 4 - 20mA, etc.
- ° Temperature Drift: ±0.02%FS/K
- ° Operating Temperature: -40 - 85°C
- ° Overload Pressure: 2\*FSO
- ° Electrical Connection: Hirschmann GDM series
- ° Process Connection: 2-inch clamp, etc., or on request

## Pressure Transmitters

PT-708, PT-709, PT-712, PT-719

Industrial applications: plant and machine engineering, etc.

### PT-708 Pressure Transmitter

The compact designed PT-708 pressure transmitter uses advanced sensor element and stainless steel welding structure. It offers outstanding performances and long-term stability for large range pressure measurement. With CE certificate, it is widely applied in injection molding machines and machine engineering field.



- ° Accuracy: 0.2%FS, 0.5%FS
- ° Pressure Range: 0 - 10MPa - 60MPa
- ° Output Signal: 0 - 10V, 4 - 20mA, etc.
- ° Temperature Drift: ±0.02%FS/K
- ° Operating Temperature: -40 - 85°C
- ° Overload Pressure: 7\*FSO
- ° Electrical Connection: M8 industrial plug
- ° Process Connection: G1/4, R1/4, etc., or on request

### PT-709 Pressure Transmitter

The compact designed PT-709 pressure transmitter uses advanced sensor element and stainless steel welding structure. It offers outstanding performances and long-term stability for large range pressure measurement. With CE certificate, it is widely applied in injection molding machines and machine engineering field.



- ° Accuracy: 0.2%FS, 0.5%FS
- ° Pressure Range: 0 - 10MPa - 60MPa
- ° Output Signal: 0 - 10V, 4 - 20mA, etc.
- ° Temperature Drift: ±0.02%FS/K
- ° Operating Temperature: -40 - 85°C
- ° Overload Pressure: 7\*FSO
- ° Electrical Connection: Hirschmann GDM series
- ° Process Connection: G1/4, R1/4, etc., or on request

### PT-712 Pressure Transmitter

The compact designed PT-712 pressure transmitter uses advanced sensor element and stainless steel welding structure. It offers outstanding performances and long-term stability for large range pressure measurement. With CE certificate, it is widely applied in injection molding machines and machine engineering field.



- ° Accuracy: 0.2%FS, 0.5%FS
- ° Pressure Range: 0 - 10MPa - 60MPa
- ° Output Signal: 0 - 10V, 4 - 20mA, etc.
- ° Temperature Drift: ±0.02%FS/K
- ° Operating Temperature: -40 - 85°C
- ° Overload Pressure: 7\*FSO
- ° Electrical Connection: M12 industrial plug
- ° Process Connection: G1/4, R1/4, etc., or on request

### PT-719 Pressure Transmitter

PT-719 pressure transmitter uses advance sensor element and is compact designed for easy installation. It offers outstanding performances and long-term stability for large range pressure measurement. With CE certificate, it is widely applied in injection molding machines and machine engineering field.



- ° Accuracy: 0.5%FS
- ° Pressure Range: 0 - 100Bar - 600Bar
- ° Output Signal: 0 - 10V, 4 - 20mA
- ° Power Supply: 9 - 33V
- ° Operating Temperature: 0 - 125°C
- ° Temperature Drift: ±0.02%FS/K
- ° Overload Pressure: 3\*FSO
- ° Electrical Connection: Hirschmann GDM series
- ° Process Connection: G1/4, R1/4, NPT1/4, etc., or on request



**Pressure Transmitters**

**Process Control**

PT-3051, PT-2088, PT-3088

**PT-3051 Intelligent Pressure/Differential Pressure/ Absolute Pressure Transmitter**

PT-3055 offers reliable and durable performance by using advanced pressure sensor element, digital processing technology and precision structural parts. It has linear and temperature compensation, automatic offset correction, back light LCD display and other important functions.

- ° Accuracy:  $\pm 0.075\%FS - 0.5\%FS$
- ° Pressure Range: 0 - 1KPa - 40MPa
- ° Output Signal: 4 - 20mA
- ° Operating Temperature: -40 - 85°C
- ° Isolation Diaphragm: 316L stainless steel, Hastelloy, Monel, tantalum and heavy metal film
- ° Options: HART communication, flange installation



PT-3051



PT-3051 Single-Flange



PT-3051 Single-Flange Capillary



PT-3051 Double-Flange

**PT-2088 Digital/Intelligent Pressure Transmitter**

PT-2088 uses advanced ceramic or silicon diaphragm. With advanced digital processing technology, automatic offset correction, and linear and temperature compensation, it provides accurate measurement for gauge pressure, absolute pressure and negative pressure for various mediums.



- ° Accuracy:  $\pm 0.1\%FS - 0.5\%FS$
- ° Pressure Range: 0 - 3KPa - 60MPa
- ° Output Signal: 4 - 20mA
- ° Operating Temperature: -40 - 85°C
- ° Overload Pressure: 2\*FSO
- ° Electrical Connection: PG7
- ° Process Connection: M20\*1.5, etc., or on request
- ° Options: HART communication, alarm output, digital display meter

**PT-2088 High-Temperature Type Pressure Transmitter**

With the state-of-the-art Silicon-on-Sapphire sensor technology and advanced temperature compensation technology, PT-2088 high-temperature type pressure transmitter has excellent long-term stability over a wide temperature range. It is ideal product for the measurement of very high or low temperature medium.



- ° Accuracy:  $\pm 0.1\%FS - 0.5\%FS$
- ° Pressure Range: 0 - 3KPa - 60MPa
- ° Output Signal: 4 - 20mA
- ° Operating Temperature: 60 - 200°C
- ° Overload Pressure: 2\*FSO
- ° Electrical Connection: PG7
- ° Process Connection: M20\*1.5, etc., or on request

**PT-3088 Intelligent Pressure Transmitter**

PT-3088 uses advanced ceramic or silicon diaphragm. With advanced digital processing technology, automatic offset correction and linear and temperature compensation, it provides accurate measurement for gauge pressure, absolute pressure and negative pressure for various mediums.



- ° Accuracy:  $\pm 0.1\%FS - 0.5\%FS$
- ° Pressure Range: 0 - 3KPa - 60MPa
- ° Output Signal: 4 - 20mA
- ° Operating Temperature: -40 - 85°C
- ° Overload Pressure: 2\*FSO
- ° Electrical Connection: PG7
- ° Process Connection: M20\*1.5, etc., or on request
- ° Option: digital display meter

**Pressure Switch**

**PS-100 Pressure Switch**

PS-100 pressure switch is made of advanced pressure sensor, high-performance digital circuits and high accuracy elements. Its output capacity is large and up to 500mA. It can monitor the gauge pressure, absolute pressure, and negative pressure of pressure steam and fluid.



- ° Full range setting for switch pressure
- ° Multiple switch modes selection
- ° Options: NPN, PNP
- ° Analog signal (4-20mA) output is available
- ° Pressure Range: 0 - 60MPa
- ° Temperature Drift:  $\pm 0.02\%FS/K$
- ° Accuracy: 0.2%FS - 0.5%FS
- ° Operating Temperature: -40 - 85°C
- ° Overload Pressure: 2\*FSO
- ° Process Connection: M20\*1.5, G1/4, etc., or on request



## Process Control

### PT-201

**Industrial applications:** refrigeration, water pump industry, printing and dyeing industry, chemical industry, etc.

#### PT-201 Pressure Transmitter

The compact designed PT-201 pressure transmitter has excellent quality and performance by using ceramic or silicon sensor, linear and temperature compensation technology, advanced sealing technology and perfect assembly process. It is suitable for gas and fluid pressure measurement.



- ° Accuracy: 0.2%FS - 0.5%FS
- ° Pressure Range: 0 - 3KPa - 60MPa
- ° Output Signal: 4 - 20mA
- ° Temperature Drift: 0.02%FS/K
- ° Operating Temperature: -40 - 85°C
- ° Overload Pressure: 2\*FSO
- ° Electrical Connection: GDM series
- ° Process Connection: M20\*1.5, etc., or on request
- ° Option: HART communication

#### PT-201 Pressure Transmitter With Digital Display

The compact designed PT-201 pressure transmitter with digital display has excellent quality and performance by using ceramic or silicon sensor, linear and temperature compensation technology, advanced sealing technology and perfect assembly process. It is suitable for gas and fluid pressure measurement.



- ° Accuracy: 0.25%FS - 0.5%FS
- ° Pressure Range: 0 - 3KPa - 60MPa
- ° Output Signal: 4 - 20mA
- ° Temperature Drift: 0.02%FS/K
- ° Operating Temperature: -40 - 85°C
- ° Overload Pressure: 2\*FSO
- ° Electrical Connection: GDM series
- ° Process Connection: M20\*1.5, etc., or on request
- ° Options: HART communication, alarm output

#### PT-201 High-Temperature Type Pressure Transmitter

The compact designed PT-201 high-temperature type pressure transmitter offers reliable pressure measurement even under high medium and ambient temperature, by using ceramic or silicon sensor, linear and temperature compensation technology, advanced sealing technology and perfect assembly process. It is suitable for gas and fluid pressure measurement.



- ° Accuracy: 0.2%FS - 0.5%FS
- ° Pressure Range: 0 - 3KPa - 60MPa
- ° Output Signal: 4 - 20mA
- ° Temperature Drift: 0.02%FS/K
- ° Operating Temperature: -60 - 200°C
- ° Overload Pressure: 2\*FSO
- ° Electrical Connection: GDM series
- ° Process Connection: M20\*1.5, etc., or on request
- ° Option: HART communication

## Level Transmitters

#### PT-928/928S Level Transmitters

With an IP68 rating, the high accuracy PT-928/928S level transmitters are professionally designed for level and process measurement by using advanced silicon or ceramic sensor element. They convert level signal into the corresponding electrical signal through digital processing technology, and support a variety of standard output signals.



- ° Accuracy:  $\pm 0.2\%FS$  -  $\pm 0.5\%FS$ ,  $\pm 0.1\%FS$  -  $0.2\%FS$
- ° Level Range: 0.1m - 200m
- ° Output Signal: 4 - 20mA, 0.5V - 4.5V
- ° Operating Temperature: -40 - 85°C
- ° Overload Pressure: 2\*FSO
- ° Electrical Connection: PG7
- ° Suitable for small measure range with high accuracy
- ° Options: HART communication, alarm output

#### PT-988 Pressure Transmitter

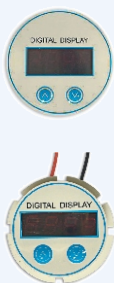
The compact PT-988 pressure transmitter features high sensitivity and stable performance due to the high accuracy sensor element. Manufactured from stainless steel and its full welded construction provides a watertight seal. With an IP68 rating, it is specially designed for the pressure measurement of urban water pipe network and water conservancy irrigation.



- ° Accuracy:  $\pm 0.2\%FS$  -  $\pm 0.5\%FS$
- ° Pressure Range: 0 - 5KPa - 60MPa
- ° Output Signal: 0.5 - 2.5V, 0.5 - 4.5V, 4 - 20mA
- ° Operating Temperature: -40 - 85°C
- ° Overload Pressure: 2\*FSO
- ° Power Supply: 0 - 3.6V, 0 - 5V, 9 - 36V
- ° Process Connection: M20\*1.5, etc., or on request

## Digital Pressure Display

#### C37 C39 Round 4-Bit Digital Pressure Display



C37 and C39 LED round head 4-bit digital pressure display are suitable for all two-wire transmitters to indicate temperature, pressure, percentage, current, voltage, etc. Optional 2088 Hart or 3051 Hart are available.

- Display Range:  
4mA: -1999-9999  
20m 20mA: -1999-9999 (button adjustment)
- Voltage Drop:  $\leq 4.2V$
- Ambient Temperature: -30 +70°C
- Medium Temperature: -30 +80°C
- Storage Temperature: -40 +85°C
- Temperature Effect:  $\leq 80PPM/^{\circ}C$
- Accuracy:  $\pm 0.02\%FS$
- Sampling Rate: 10 times per second
- Switch Output

#### Square 4-Bit Digital Pressure Display



This square head 4-bit digital pressure display is suitable for all two-wire transmitters to indicate temperature, pressure, percentage, current, voltage, etc.

- Display Range:  
4mA: -1999-9999  
20m 20mA: -1999-9999 (button adjustment)
- Voltage Drop:  $\leq 4.2V$
- Ambient Temperature: -30 +70°C
- Medium Temperature: -30 +80°C
- Storage Temperature: -40 +85°C
- Temperature Effect:  $\leq 80PPM/^{\circ}C$
- Accuracy:  $\pm 0.02\%FS$
- Sampling Rate: 10 times per second
- Switch Output





## Shenzhen OULD INSTRUMENT CO., LTD

Headquarter address:

6F, Building B, No. 11, Dakan Industrial 2nd Road, Xili Town, Nanshan District, Shenzhen, 518055, China

Tel: +86-755-86147580

Fax: +86-755-86147585

Mail: [sales@ould.com.cn](mailto:sales@ould.com.cn); [ouldsales@163.com](mailto:ouldsales@163.com)

Website: [www.ouldsensor.com](http://www.ouldsensor.com); [www.ould.com.cn](http://www.ould.com.cn)

Research and sales center address:

A407, Lankun Group, No. 29 Baoshi Road, Bao'an District, Shenzhen, 518101, China

Tel: +86-755-23501460